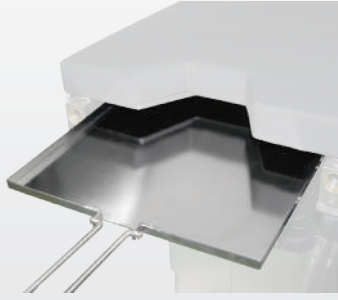


Accessory Catalogue



General Accessories



0702.0076
X-ray Cassette Tray



10-060
Instrument Table, standard



10-061
Instrument Table, double jointed



10-455
Transport Handles, pair



10-456
Transport Handles, pair



10-457
Transport Handles, pair, EU or UK rail



10-458
Transport Handles, pair, EU, UK & US rail



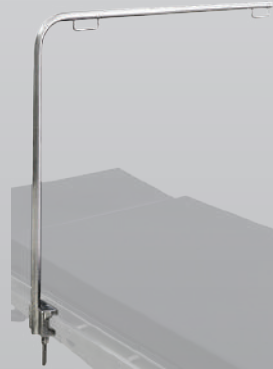
1404.0000
Anesthesia Screen, with abductable extension tubes



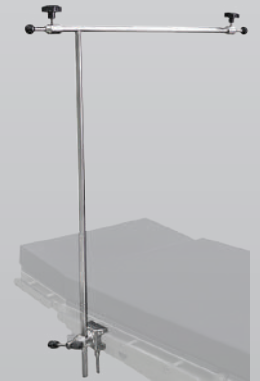
1504.0000
Mobile Accessories Stand



1514.0000
Head Rest for ENT & Ophthalmology, horseshoe-shaped, double-jointed



1601.0140
Anesthesia Screen, basic, L-shaped



1601.0295
Anesthesia Screen, wide-adjustable



1601.0305
IV Pole, height-adjustable, 4 hooks

Arm - Hand Positioning



10-366
Elbow support



10-389
Arm Support, long, double-jointed, for lateral and sitting position



1406.0000_1503.1000
Flat Arm Board, basic, with integrated rail clamp with Hand Strap, basic



1406.1000
Arm Board, long, for lateral and sitting position



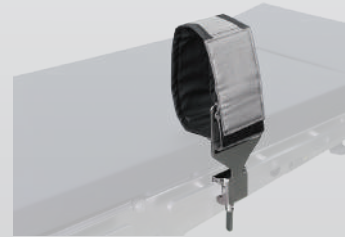
1406.2000
Universal Arm Board, with vertical and horizontal adjustment



1507.0000
Hand Support for ENT & Ophthalmology



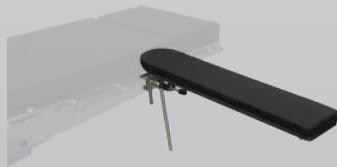
1508.0000
Hand Operating Table



1601.0150
Wristlet, with integrated side rail clamp

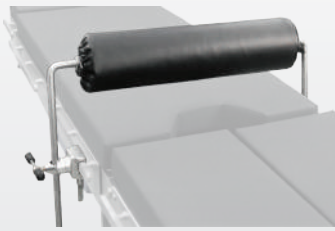


1601.0170
Hand Strap for anesthesia screen



1601.0186
Flat Arm Board, height-adjustable

Patient Positioning - Lateral Supports



0702.0038
Large Support Roll



10-350
Shoulder Support, premium



10-360
Lateral Support, premium,
narrow, curved, rotatable



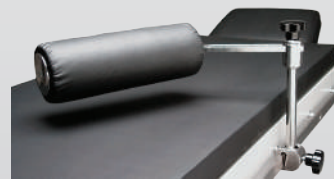
10-361
Lateral Support, premium,
narrow, plane



10-365
Lateral Support, premium,
wide, curved



10-368
Side Support, large roll



10-369
Side Support, large roll



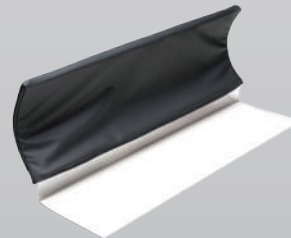
10-466
Leg Strap, 2 piece



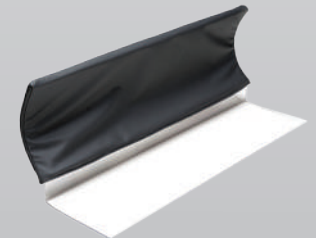
10-467
Leg Strap, 1100mm



10-468
Leg Strap for split leg section,
pair



10-552
Arm & Leg Guard



10-553
Cover for Arm & Leg Guard



10-560
Lateral Support, premium,
integral, narrow, curved &
plane, 2x pads, rotatable



10-561
Lateral Support, premium,
integral, wide, curved & plane,
2x pads, rotatable



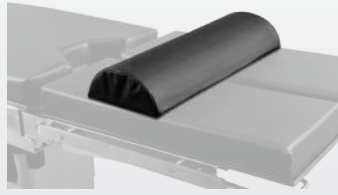
10-565
Lateral Support, premium,
integral, wide, curved & plane,
2x pads



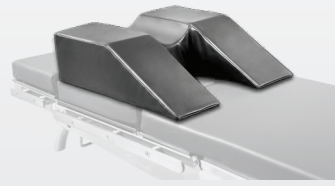
1407.2000
Shoulder support, basic



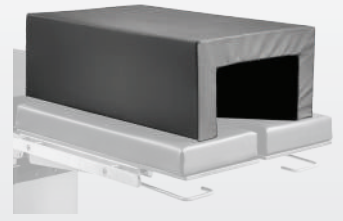
1415.0003
Kneeling Position Pad



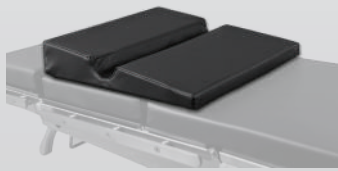
1415.0004
Half-round Pad



1415.0005
Head or Shoulder Pad



1415.0006
Tunnel Pad, for lateral position



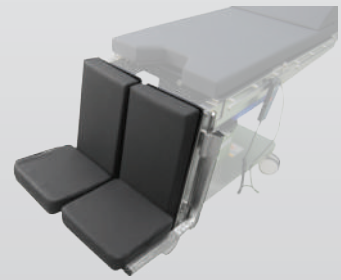
1415.0007
Lateral Position Pad



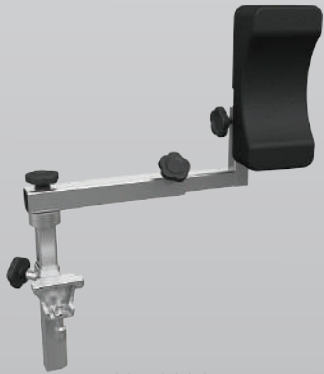
1415.0008
Spinal Surgery Pad



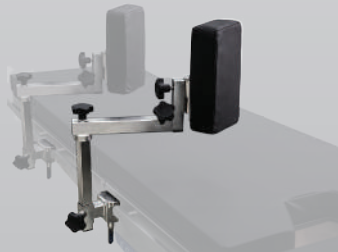
1518.0000
Combined Lateral & Shoulder
Support, basic



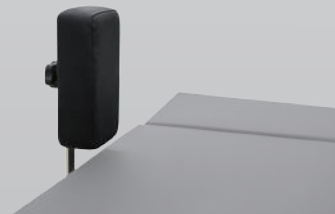
1601.0061
Leg Supports, divided, 90°, 1
pair



1601.0096-A
Lateral Support, LX, curved



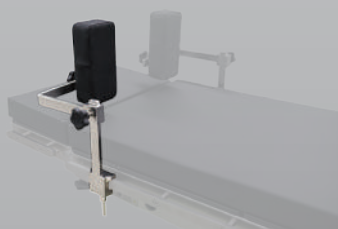
1601.0096-B
Lateral Support, LX, flat



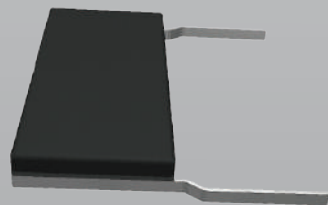
1601.0125
Lateral Support, standard



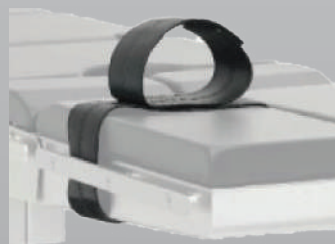
1601.0269
Body Strap, large, padded



1601.0315
Shoulder Support, LX



FJ-09-00
Leg Support, basic 90°



FJ-36
Leg or Thigh Strap



10-353
Knee holder, Arthroscopy



10-367
Tibia Support



10-393
Weinberger Hand Traction
Plate



11-438
Counter Traction Post
(Humerus)



402.01
Orthopaedic Extension Device

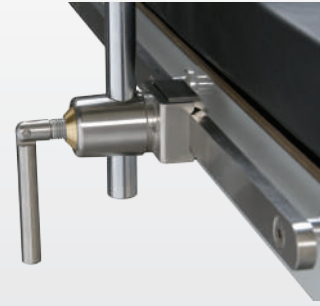
Rail Clamps - Side Rail Attachments - Adaptors



10-302
Radial Setting Clamp, standard



10-304
Radial Setting Clamp, premium, with shaft



10-305
Radial Setting Clamp, hook-on type



10-307
Radial Setting Clamp, hook-on type, with locking lever



10-308
Radial Setting Clamp



10-491
Extension Rail



10-530
Safety Side Rails, foldable, pair



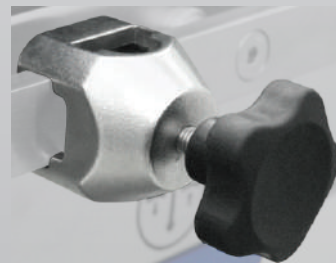
10-531
Safety Side Rails, foldable, pair



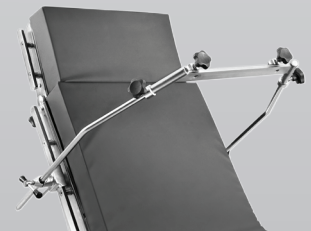
1401.0000
Radial Setting Clamp, standard, for round rods



1402.0000
Setting Clamp, standard, for round rods



1402.2000
Square Setting Clamp, basic, universal



FJ-82-00
Crossbar Adaptor For Skull Clamp

Accessories for Leg Positioning - Gynaecology - Urology



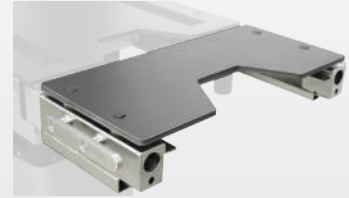
1404.3000
Urology or Gynaecology
Drainage Set



1505.0000
Leg Holder, Goepel



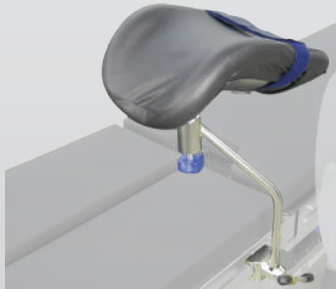
1505.00A1
Auto Lift Stirrup



1510.1000
OR Table - Extension Plate
(TUR)



1601.0051
Lithotomy Stirrups, standard



5737.0001
Leg Holder, Goepel large

GUBBEMED INTERNATIONAL GmbH
Ruhlsdorfer Strasse 49
16359 Biesenthal - GERMANY
TEL: +49 (0)30 2758 9284
FAX: +49 (0)30 2758 9198

www.gubbemed.de
info@gubbemed.de