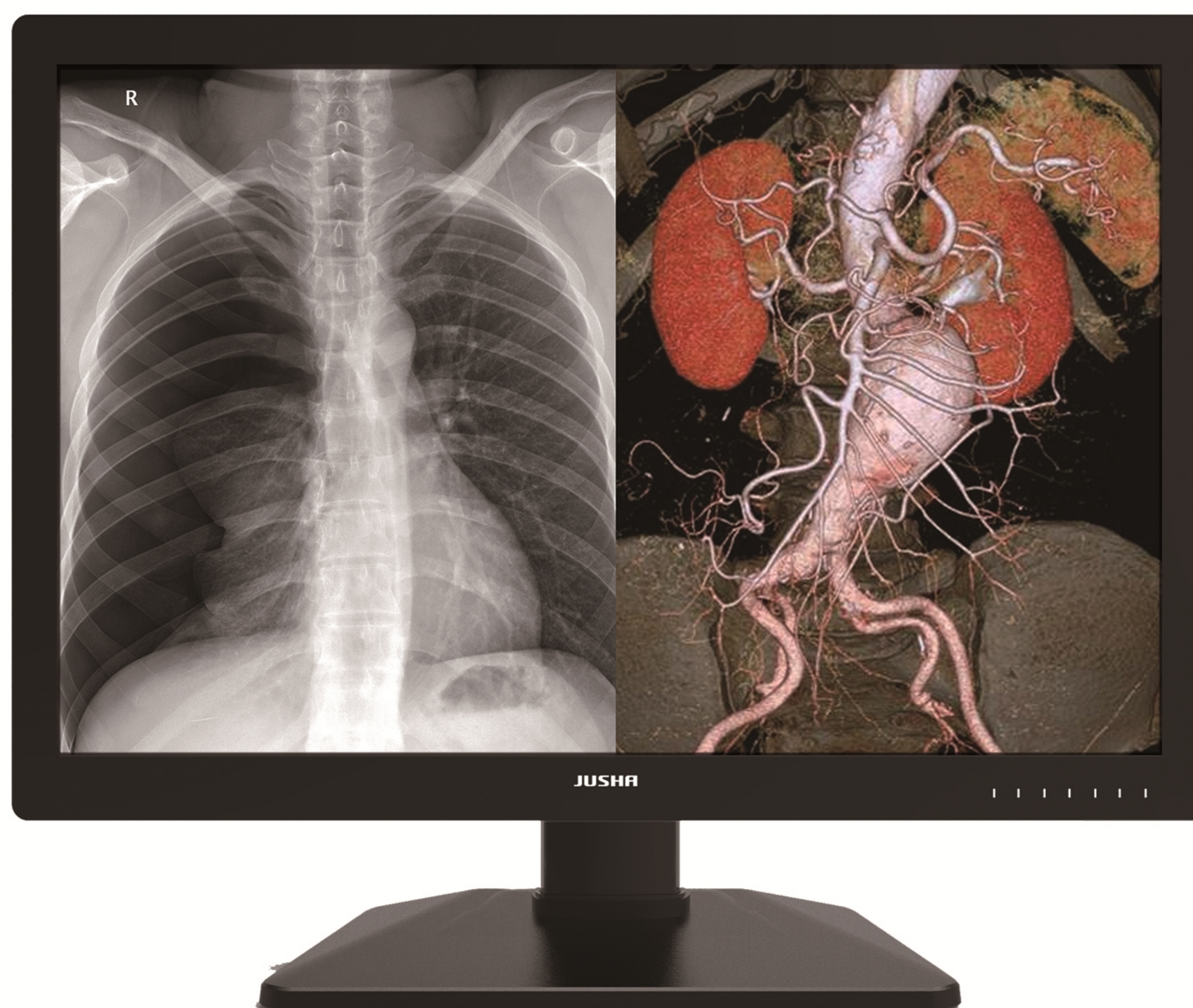




# C630G

## Medical Display

Brand new reporting, improving the display experience  
Real-time accurate calibration, and providing a variety of professional applications.



**MEDICAL DISPLAY EXPERT**

JUSHA DISPLAY TECHNOLOGY CO.,LTD  
HOTLINE:400-820-0556 800-820-0556

# Product Features

---

## 1.Integrated Dual-screen

Two different output images can be displayed on one screen, showing more accurate image and perfect “consistency”

## 2.SmarTouch

JUSHA developed the technology of switchable luminance by one key (SmarTouch). The luminance can be changed by tapping the SmarTouch button, and the luminance remains stable immediately based on the BIA technology. It guarantees an accurate diagnosis as well as visual protection for doctors.

## 3.Front-sensor calibration

The front induction probe can detect the luminance of the light emitted by the display panel, in combination with the backlight sensor, the luminance is consistent with the DICOM standard.

## 4.Full screen luminance equalization correction (Full screen luminance ecology)

The system can measure and adjust the luminance of each pixel, reduce the nonuniformity of luminance and color between the center and the corner, by reducing such differences, it ensures the whole display area of the display meet the DICOM GSDF standard. In addition, the system allows for uniform luminance and reduced noise point of the whole screen, from the center to the corners, being compliant with the DICOM standard this increases contrast and detection accuracy, obtaining a satisfying image quality.

## 5.Negatoscope

Enabling the function of viewing film, convenient for the doctor to quickly read films

## 6.Remote smart energy-saving Eco-guardian

Unattended, automatic sleep mode when standby , automatic wake-up

When user returned in front of the monitor

JUSHA professional medical display is equipped with Eco-guardian function, which can be used for detection of the existence of users in front of the monitor. The monitor can get into sleep mode after a preset time to save energy. Moreover, it can differentiate the users and other lifeless objects like chairs, making the operation smarter and more convenient.

## 7.Ambient luminance self-adaptation

JUSHA ambient luminance self-adaptation system can detect the ambient light, coordinate with the observation capability of the human eyes, To better display the image under various lighting conditions.

## 8.16BIT

It can express 281 trillion's color or 65536-grade grayscale, making the transition of medical image smoother.

## 9.WEBQA

The Remote Quality Control System (WEBQA) paired with JUSHA medical professional display monitor can monitor and control the status of all JUSHA medical professional displays remotely through network.

# Specification

Model No.	C630G
Backlight	LED
Size	30"
Active Display	645.5(H)×403.0(V)mm
Resolution	3280×2048
Pixel Pitch	0.197×0.197mm
Ton+Toff Response Time	30ms(15ms+15ms)
Maximum brightness	800cd/m <sup>2</sup>
Contrast Ratio	1000:1
Colour bit depth	281.47Trillion Colors(16bit)
View angle	≥170° ( CR≥10 )
Sensor	Backlight /Front /Presence /Ambient Light /Temperature Sensor
Maximum calibrated brightness	500cd/m <sup>2</sup>
Gamma presets	DICOM Presets and GAMMA GSDF
LUT	DICOM ,GAMMA2.2 ,GAMMA2.4,DSA,DSI ,CT/MRI
Interface	Input : DVI-D×1、 DP×2 Output : DP×1 ( Daisy chain )
Power Requirements	24VDC-6.25A
Max Power Consumption	150W
Typical Power Consumption	110W
Cabinet color	Matte black
Dimensions	705mm*567mm*262mm
Dimensions ( Without Stand )	705mm*477mm*77mm
Net Weight	19.5kg
Net Weight ( Without Stand )	15.5kg
Hole Spacing	VESA : 100*100mm
Osd Languages	Chinese,English