

Barco Healthcare

Medical solutions portfolio



About Barco

Focused on transforming the delivery of care, Barco connects healthcare professionals at every patient touchpoint, from the imaging room to radiology, through specialist consultations and into the surgical suite. We offer a network of medical imaging solutions that deliver the complete picture to support more informed decisions, when and where it matters most.



HOME READING



Recognized as the Visionary Innovation Leader in medical displays by Frost & Sullivan



Recognized as the Technology Leader in the Multi-modal Medical Display Industry by Frost & Sullivan



Please note that some of our products might not be available in all regions

Coronis Uniti®

breast imaging

radiology

Radiology displays and breast imaging displays



The first diagnostic display system explicitly designed for both PACS and multimodality breast imaging. Unique in its spectacular representation of calibrated color and grayscales. Remarkable in its 2D and 3D capabilities. Capable of both static and dynamic imaging.

Your benefits

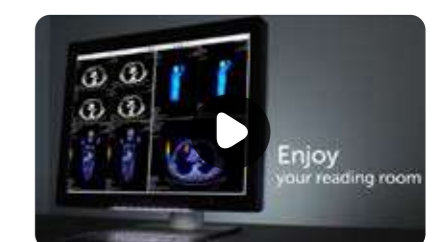
- > One display for all images to unify your workflow
- > 12% more pixels to display more or larger images
- > The brightest display on the market - delivers exceptional brightness resulting in more JNDs
- > Barco Optical Glass™ reduces reflections and improves contrast
- > Rapidframe technology, used in displays intended for Digital Breast Tomosynthesis, can lead up to 10% higher detection of small details¹
- > Calibrated luminance levels of 1000 cd/m² lead to increased detection probability of breast microcalcifications compared to calibrated luminance levels of 500 cd/m²²
- > Optimized for the standard field of vision and low reflection to minimize eye-fatigue
- > Intuitive workflow tools selectively dim/boost and focus light for closer inspection
- > Cleared for multimodality breast imaging, incl. breast tomosynthesis, 3D mammography, breast MRI, breast ultrasound, CT and ultrasound, including vascular and gynecological ultrasound
- > Industry-leading 5-year warranty

Models and options

12 reasons Coronis Uniti is an excellent companion for breast radiologists



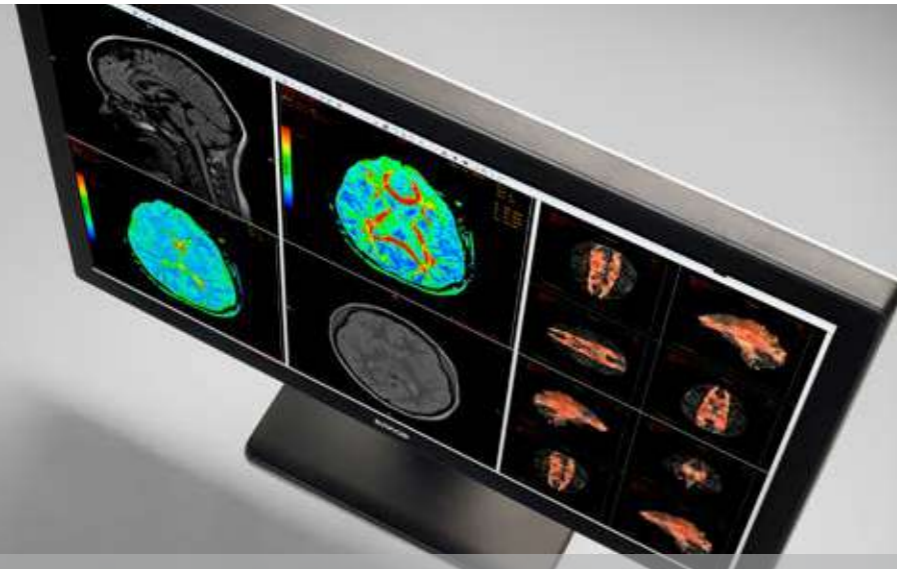
Read more



Meet Coronis Uniti

Coronis Fusion

radiology



Coronis Fusion, perfected for color imaging with vivid and calibrated colors to help you see important color image details. Ergonomically designed to reduce repetitive stresses. Optimized for an efficient workflow with our suite of Intuitive Workflow Tools.

Your benefits

- > Bright, calibrated luminance of 600 cd/m2 for the lifetime of the display
- > Uniform luminance with patented Color PPU technology
- > High contrast of 2000:1 to see subtle image details
- > SteadyColor™ calibration technology to see details in the important color content of images
- > Wide Gamut display
- > Wide viewing angle in your field of view
- > Higher brightness allows you to see more details with less eye strain
- > SoftGlow™ task and wall lighting
- > SpotView™ to see more details in the image more quickly – 15.5% decreased reading time
- > Auto QA and compliance tests meet the latest regional standards
- > Assure compliance and uptime of all your PACS workstations
- > Intervention-free QA saves time, reduces effort and cost
- > Industry-leading 5-year warranty

Models and options



Meet Coronis Fusion



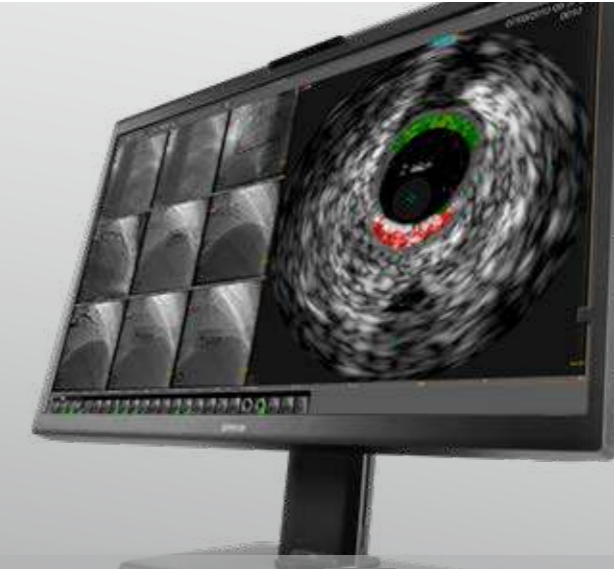
Watch the demo

Nio

breast imaging

radiology

dentistry



A family of diagnostic displays that bring dependable diagnostic imaging to its true potential. Nio's proven technologies ensure diagnostic confidence at all times, making it the standard for the radiology reading room.

Your benefits

- > Most efficient dual-head option on the market
- > Highest brightness and contrast - luminance ratio exceeds ACR guidelines
- > Minimal image manipulations – less windowing, leveling, zooming & panning
- > More DICOM JNDs to see more subtle details quicker
- > Uniform image rendering center to edge
- > Factory-fit front cover reduces reflection and improves visible contrast
- > Industry-leading 5-year warranty

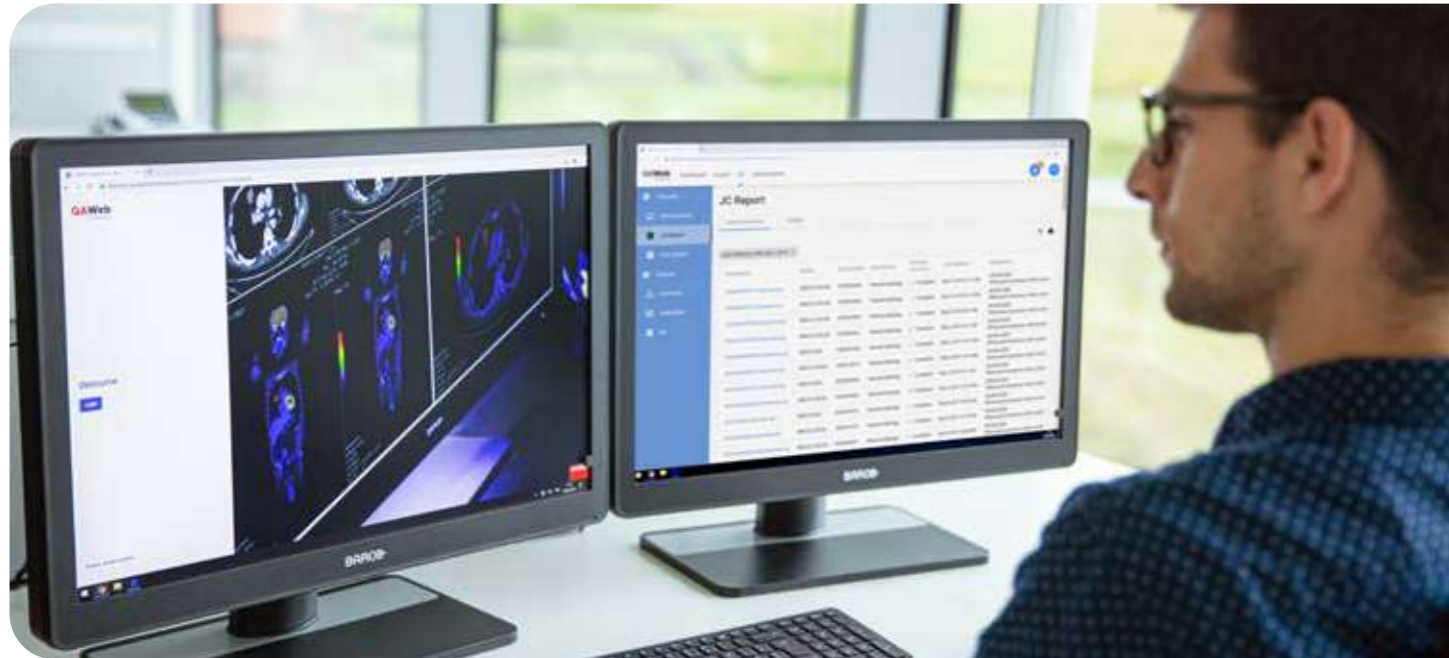
Clinical collaboration at home, in the hospital, anywhere Nio Color 8MP

- Designed for home reading with integrated microphone, camera and speakers
- Large 32" screen size with 8MP resolution and excellent image quality
- Automated QA & compliance

Models and options

QAWeb Enterprise

Always a clear view



QAWeb Enterprise supports consistent image quality through automated calibration and QA, and also enables compliance to the latest regional and international regulations for image quality. Get the most out of your display fleet, in the hospital, at home, or elsewhere, and ensure best-in-class performance and optimal usage throughout your displays' lifetimes.

What makes QAWeb Enterprise so unique?

- > Scalable: Powerful tools to manage workstations from anywhere, at anytime
- > Flexible: Customize policies to meet your quality requirements
- > Intuitive: Effortless compliance and smart reporting
- > Secure: Assured security and patient privacy



QAWeb Enterprise video



Watch the demo

Download QAWeb Enterprise

Intuitive Workflow Tools

Diagnostic work can be complicated, with many cases to analyze in little time. That's why your medical display should not just be a medium to view digital images, but also an active tool that helps you work with them, comfortably. Our Intuitive Workflow Tools are designed to do exactly that.

Thanks to our advanced medical display controllers, Intuitive Workflow Tools are integrated into your Barco display for radiology, mammography, pathology, clinical review imaging and dentistry.

- > Improve your focus with a range of tools specifically designed to help you concentrate on important details.
- > Adapt your workstation's settings to how both you and your colleagues work best.
- > Boost your workflow further thanks to those extras and make your workspace extra comfortable!

You choose which ones you use, and how you use them. Work smarter, not harder!

Learn more about our suite of Intuitive Workflow Tools



Some Intuitive Workflow Tools in the spotlight...

SpotView

SpotView enables focused observation during readings by dimming images outside a region of interest and enhancing the contrast within it. Especially helpful when viewing pediatric extremities, breast calcifications and chest images, SpotView supports analyzing subtle differences in the image.



DL Precise

If you're a radiologist who frequently handles dense breast images, then DL Precise is a true game-changer. The AI-driven software tool augments an area you choose with a vividly colored density map and calculates the morphology of suspicious areas.

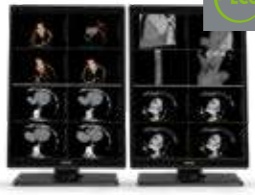
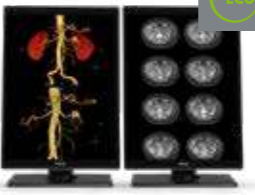







DL Precise is currently available in limited regions. Please consult your Barco representative to confirm availability.

SoftGlow

Get full control of the ambient light surrounding your workstation. Displays equipped with SoftGlow offer you two light sources, coming from your display. In this way, your eye needs to adapt less intensively when it moves from your bright display to something in your darker office. You can choose which one should be on or use both at the same time. Adjust their brightness according to your preference!



RADIOLOGY DISPLAYS AND MAMMOGRAPHY DISPLAYS

	2MP	3MP	4MP	5MP	6MP	8MP	12MP		
	MDNC-2521	MDNC-3521	MDCC-4430	MDNG-6221	MDNC-6121	MDCC-6530	MDNC-8132	MDNC-12130	MDMC-12133
									
SPECIFICATIONS	Nio Color 2MP	Nio Color 3MP	Coronis Fusion 4MP	Nio Gray 5.8MP	Nio Color 5MP	Coronis Fusion 6MP	Nio Color 8MP	Nio Fusion 12MP	Coronis Uniti®
Warranty	5 years	5 years	5 years	5 years	5 years	5 years	5 years	5 years	5 years
Active screen size (H x V)	433 x 325 mm (17.1 x 12.8")	433 x 325 mm (17.1 x 12.8")	655 x 410 mm (25.8 x 16.1")	324 x 433 mm (12.77" x 17")	433 x 325 mm (17 x 12.8")	654 x 409 mm (25.8 x 16.1")	708.48 x 398.52 mm (27.9 x 15.7")	653 x 435 mm (25.7 x 17.1")	708.1 x 472.1 mm (27.8 x 18.6")
Screen technology	IPS-SFT Color LCD	IPS-SFT Color LCD	IPS-TFT color LCD	LCD	a-si TFT active matrix dual domain IPS	IPS-TFT color LCD	IPS	LCD	IPS
Diagonal size	541 mm (21.3")	541 mm (21.3")	772 mm (30.4")	541 mm (21.3")	540 mm (21.3")	772 mm (30.4")	812.80 mm (32.0")	784 mm (30.9")	853.44 mm (33.6")
Aspect ratio	4:3	4:3	16:10	3:4	3:4	16:10	16:9	3:2	3:2
Resolution	2MP (1200 x 1600)	3MP (1536 x 2048)	Native 4MP (2560 x 1600) Configurable to 2 x 2MP+ (1280 x 1600) Configurable to 2 x 2MP (1200 x 1600)	5.8 MP (2100 x 2800)	5.8MP (2100 x 2800)	Native 6MP (3280 x 2048) Configurable to 2 x 3MP+ (1640 X 2048) Configurable to 2 x 3MP (1536 X 2048)	8MP (3840 x 2160)	Native 12MP (4200 x 2800) Configurable to 2 x 5.8MP (2100 x 2800)	4200 x 2800
Luminance (DICOM calibrated)	1000 cd/m ² (600 cd/m ²)	1050 cd/m ² (600 cd/m ²)	1050 cd/m ² (600 cd/m ²)	1000 cd/m ² (600 cd/m ²)	1000 cd/m ² (600 cd/m ²)	1050 cd/m ² (600 cd/m ²)	850 cd/m ² (420 cd/m ²)	1200 cd/m ² (600 cd/m ²)	2100 cd/m ² (1000 cd/m ²)
Contrast ratio	2000:1	2000:1	2000:1	1400:1	1400:1	2000:1	1350:1	1500:1	1200:1
Screen protection	Factory fit protective, non-reflective glass cover	Factory fit protective, non-reflective glass cover	Factory fit protective, non-reflective glass cover	Factory fit protective, non-reflective glass cover	Factory fit protective, non-reflective glass cover	Factory fit protective, non-reflective glass cover	N/A	N/A	Protective, anti-reflective optical glass
Sensor technology	Integrated I-Guard front-ofscreen photometer sensor, ALC	Integrated I-Guard front-ofscreen photometer sensor, ALC	Integrated I-Guard front-ofscreen color sensor, Intelligent Multi-Sensor Technology, ALC	Integrated I-Guard front-ofscreen photometer sensor, ALC	Integrated front-of-screen sensor, BLOS, ALC	Integrated I-Guard front-ofscreen photometer sensor, Intelligent Multi-Sensor Technology, ALC	Ambient light sensor, I-Guard front sensor, Presence sensor	I-Guard, ALS	Integrated color I-Guard front-of-screen photometer sensor, Intelligent Multi-Sensor Technology, ALC
Diagnostic imaging technology	SteadyColor, SteadyGray, MXRT, Intuitive Workflow Tools	SteadyColor, SteadyGray, MXRT, Intuitive Workflow Tools	SteadyColor, Color PPU, SmoothGray, MXRT, Intuitive Workflow Tools with optional touchpad	ULT, SteadyGray, MXRT, Intuitive Workflow Tools	ULT, MXRT, Intuitive Workflow Tools, SteadyColor, SteadyGray, Clear/BlueBase	SteadyColor, Color PPU, SmoothGray, MXRT, Intuitive Workflow Tools with optional touchpad	ULT, MXRT, Intuitive Workflow Tools, SteadyColor, SteadyGray	RapidFrame™, ULT, MXRT, Intuitive Workflow Tools, SteadyColor™, SteadyGray	SteadyColor, Color PPU, I-Luminate, RapidFrame, SmoothGray, DuraLight, Clear/BlueBase, SoftGlow, Filmclip, MXRT, Intuitive Workflow Tools with Touchpad
Video input signals	DisplayPort 1.4 (2x)	DisplayPort 1.4 (2x)	DisplayPort 1.2 (2x)	DVI-D Dual Link, DisplayPort	DVI-D Dual Link, DisplayPort	DisplayPort 1.2 (x2)	DisplayPort 1.4 (x2)	DisplayPort 1.2 (2x) with built-in KVM switching	DisplayPort 1.2 (2x)
Medical device regulations	FDA: Medical Device Class II EC: Medical device class IIa (Regulation (EU) 2017/745)	FDA: Medical Device Class II EC: Medical device class IIa (Regulation (EU) 2017/745)	FDA: Medical Device Class II EC: Medical device class IIa (Regulation (EU) 2017/745)	FDA: Medical Device Class II EC: Medical device class IIa (Regulation (EU) 2017/745)	FDA: Medical Device Class II EC: Medical device class IIa (Regulation (EU) 2017/745)	FDA: Medical Device Class II EC: Medical device class IIa (Regulation (EU) 2017/745)	FDA: Medical Device Class II EC: Medical device class IIa (Regulation (EU) 2017/745)	FDA: Medical Device Class II EC: Medical device class IIa (Regulation (EU) 2017/745)	FDA: Medical Device Class II EC: Medical device class IIa (Regulation (EU) 2017/745)
Package includes	Nio display system, MXRT graphics controller, Intuitive Workflow toolset, 5-year all-inclusive warranty, QAWeb	Nio display system, MXRT graphics controller, Intuitive Workflow toolset, 5-year all-inclusive warranty, QAWeb	Coronis Fusion diagnostic display system, MXRT graphics controller, Intuitive Workflow toolset, 5-year all-inclusive warranty, QAWeb	Nio display system, MXRT graphics controller, Intuitive Workflow toolset, 5-year all-inclusive warranty, QAWeb	Nio display system, MXRT graphics controller, Intuitive Workflow toolset, 5-year all-inclusive warranty, QAWeb	Coronis Fusion diagnostic display system, MXRT graphics controller, Intuitive Workflow toolset, 5-year all-inclusive warranty, QAWeb	Nio display system including built-in multimedia functionalities, MXRT graphics controller, Intuitive Workflow toolset, 5-year all-inclusive warranty, QAWeb	Nio display system, MXRT display controller, Intuitive Workflow toolset, Warranty for 5-years including 40,000 hour backlight, QAWeb	Coronis Uniti diagnostic display system, MXRT graphics controller, Intuitive Workflow toolset, SoftGlow keyboard and wall light, Touchpad and film clip
Options	Additional MXRT graphics controller options, Additional service and warranty options	Additional MXRT graphics controller options, Additional service and warranty options	Additional MXRT graphics controller options, Additional service and warranty options	Additional MXRT graphics controller options, Additional service and warranty options	Additional MXRT graphics controller options, Additional service and warranty options	Additional MXRT graphics controller options, Additional service and warranty options	Additional MXRT graphics controller options, Additional service and warranty options	Additional MXRT display controller options, Additional service and warranty options	Additional service and warranty options

MDPC-8127

digital pathology



Digital pathology display

Meet MDPC-8127, Barco's ultra-high definition 27-inch medical display designed exclusively for digital pathology. With regulatory clearances for use in digital pathology including primary diagnosis, it's the first display that you can confidently integrate into your digital pathology workflow with multiple whole slide imaging systems.*



Watch the demo

*In the USA the MDPC-8127 can be used with WSI scanners and viewing software that have been validated for use with the display.

Learn more

MDPC-8127 specifications

Warranty	5 years
Active screen size	569 x 335 mm (22.4 x 13.2")
Screen technology	IPS LCD with LED
Diagonal size	684 mm (27")
Aspect ratio	16:9*
Native resolution	8MP (3840 x 2160 @ 120Hz)
Luminance	450 cd/m ² (max. 850 cd/m ²)
Contrast ratio	1000:1
Color depth	10 bit
Color gamut	132% sRGB
Sensor technology	I-Guard & ambient light sensors
Imaging technology	RapidFrame, PPU
Video input signals	2x DisplayPort 1.2
Medical device regulations	FDA: Class II EC: Medical device class IIa (Regulation (EU) 2017/745)
Package includes	MDPC-8127, QAWeb Enterprise, Barco touchpad, 5-year warranty
Options	MXRT display controller Intuitive Workflow Toolset Additional warranty and service options

Eonis

dentistry

EMR

other



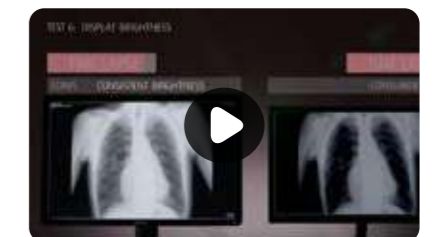
Dentistry displays and clinical review displays

Ranging from 1MP to 8MP and available in different sizes, Barco's Eonis clinical monitors accommodate a wide variety of needs for viewing information and images, in the hospital and elsewhere. They combine consistent, high image quality and a versatile design with centralized quality assurance, including a unique front sensor for consistent images.

Your benefits

- > Designed for hospital and dental environments, with various mounting options and additional features
- > Ambient Light pre-sets for dark rooms, offices and the OR
- > Supports efficient inter-disciplinary collaboration with consistent quality controlled images
- > Cleanable displays for infection control (70% alcohol-based cleaning agents)
- > Sensor for bright and consistent image quality, and remote QA management tools
- > Lowest cost-of-ownership over time without a need for capital budget
- > 3-year warranty

Eonis vs consumer displays



Watch video

Models and options

DENTISTRY DISPLAYS

MDRC-2222



MDRC-2324



MDNC-2123, option DE



MDNC-3521, option DE



SPECIFICATIONS	Eonis 22" white	Eonis 24" white	Nio Color 2MP	Nio Color 3MP
Warranty	3 years	3 years	5 years	5 years
Active screen size	476 mm x 268 mm (18.7" x 10.5")	518.4 mm x 324.0 mm (20.41" x 12.76")	521 x 293 mm (20.5 x 11.5")	433 x 325 mm (17.1 x 12.8")
Screen technology	LCD	LCD	LCD	IPS-SFT Color LCD
Diagonal size	546 mm (21.5")	609.6 mm (24.0")	598 mm (23.6")	541 mm (21.3")
Aspect ratio	16:9	16:10	16:9	4:3
Native resolution	2MP (1920 x 1080)	2MP (1920 x 1200)	2MP (1920 x 1080)	3MP (1536 x 2048)
Luminance (DICOM calibrated)	300 cd/m ² (180 cd/m ²)	Standard brightness version: 430 cd/m ² (250 cd/m ²) High brightness version: 600 cd/m ² (350 cd/m ²)	370 cd/m ² (460 cd/m ²)	1050 cd/m ² (600 cd/m ²)
Contrast ratio	1000:1	1000:1	1000:1	2000:1
Screen protection	Protective, anti-glare glass cover	Protective, anti-glare glass cover	Optional: protective cover, anti-reflective glass cover	Factory fit protective, non-reflective glass cover
Front sensor technology	Front consistency sensor	Front consistency sensor	Integrated front-of-screen sensor, BLOS, ALC presets	Integrated I-Guard front-of-screen photometer sensor, ALC
Video input signals	DisplayPort, DVI	DisplayPort, DVI	DisplayPort, DVI	DisplayPort 1.4 (2x)
Medical device regulations	FDA: Medical device class I EC: Medical device class I (Regulation (EU) 2017/745)	FDA: Medical device class I EC: Medical device class I (Regulation (EU) 2017/745)	FDA: Medical Device Class II C: Medical device class IIa (Regulation (EU) 2017/745)	FDA: Medical Device Class II EC: Medical device class IIa (Regulation (EU) 2017/745)
Package includes	<ul style="list-style-type: none"> Eonis display 3-year all-inclusive warranty QAWeb 	<ul style="list-style-type: none"> Eonis display 3-year all-inclusive warranty QAWeb 	<ul style="list-style-type: none"> Nio display 5-year all-inclusive warranty QAWeb 	<ul style="list-style-type: none"> Nio display system MXRT graphics controller Intuitive Workflow toolset 5-year all-inclusive warranty QAWeb
Options	<ul style="list-style-type: none"> MXRT graphics controller Intuitive Workflow toolset Versions: white/black, cover/no cover/touchscreen Additional service and warranty options 	<ul style="list-style-type: none"> MXRT graphics controller Intuitive Workflow toolset Versions: white/black, standard/high-brightness, cover/no cover/touchscreen Additional service and warranty options 	<ul style="list-style-type: none"> Additional MXRT graphics controller options Intuitive Workflow toolset Protective cover Additional service and warranty options 	<ul style="list-style-type: none"> Additional MXRT graphics controller options Additional service and warranty options

CLINICAL REVIEW DISPLAYS

MDRC-1419



MDRC-2421



MDRC-2422



MDRC-2324



MDRC-8132



SPECIFICATIONS	Eonis 19"	Eonis 21"	Eonis 22"	Eonis 24"	Eonis Color 8MP
Warranty	3 years	3 years	3 years	3 years	3 years
Active screen size	376 x 301 mm (14.81 x 11.85")	432 mm x 324 mm (17" x 12.76")	476 mm x 268 mm (18.7" x 10.5")	518.4 mm x 324.0 mm (20.41" x 12.76")	708.48 x 398.52 mm (27.9 x 15.7")
Screen technology	IPS-TFT Color LCD	TFT Color LCD	TFT Color LCD IPS	TFT Color LCD IPS	IPS
Diagonal size	482 mm (19")	541 mm (21.3")	546 mm (21.5")	609.6 mm (24.0")	812.80 mm (32.0")
Aspect ratio	5:4	4:3	16:9	16:10	16:9
Native resolution	1MP (1280 x 1024)	2MP (1600 x 1200)	2MP (1920 x 1080)	2MP (1920 x 1200)	8MP (3840 x 2160)
Luminance (DICOM calibrated)	330 cd/m ² (250 cd/m ²)	440 cd/m ² (250 cd/m ²)	300 cd/m ² (180 cd/m ²)	Standard brightness version: 430 cd/m ² (250 cd/m ²) High brightness version: 600 cd/m ² (350 cd/m ²)	500 cd/m ² (300 cd/m ²)
Contrast ratio	1000:1	1500:1	1000:1	1000:1	1000:1
Screen protection	Optional: PCAP touchscreen	N/A	Optional: PCAP touchscreen	Optional: PCAP touchscreen	N/A
Front sensor technology	Front consistency sensor	Front consistency sensor	Front consistency sensor	Front consistency sensor	Front consistency sensor
Video input signals	DisplayPort, DVI-I, HDMI™	DisplayPort, DVI-I, HDMI™	DisplayPort, DVI-I, HDMI™	DisplayPort, DVI-I, HDMI™	DisplayPort 1.4 (x2)
Medical device regulations	FDA: Medical device class I EC: Medical device class I (Regulation (EU) 2017/745)	FDA: Medical device class I EC: Medical device class I (Regulation (EU) 2017/745)	FDA: Medical device class I EC: Medical device class I (Regulation (EU) 2017/745)	FDA: Medical device class I EC: Medical device class I (Regulation (EU) 2017/745)	FDA: Medical device class I EC: Medical device class I (Regulation (EU) 2017/745)
Package includes	<ul style="list-style-type: none"> Eonis display 3-year all-inclusive warranty QAWeb 	<ul style="list-style-type: none"> Eonis display 3-year all-inclusive warranty QAWeb 	<ul style="list-style-type: none"> Eonis display 3-year all-inclusive warranty QAWeb 	<ul style="list-style-type: none"> Eonis display 3-year all-inclusive warranty QAWeb 	<ul style="list-style-type: none"> Eonis display 3-year all-inclusive warranty QAWeb
Options	<ul style="list-style-type: none"> MXRT graphics controller PCAP touchscreen Intuitive Workflow toolset High-bright version Additional service and warranty options 	<ul style="list-style-type: none"> MXRT graphics controller PCAP touchscreen Intuitive Workflow toolset High-bright version Additional service and warranty options 	<ul style="list-style-type: none"> MXRT graphics controller PCAP touchscreen Intuitive Workflow toolset Additional service and warranty options 	<ul style="list-style-type: none"> MXRT graphics controller PCAP touchscreen Intuitive Workflow toolset High-bright version Additional service and warranty options 	<ul style="list-style-type: none"> MXRT graphics controller Intuitive Workflow toolset Additional service and warranty options

The terms HDMI, HDMI High-Definition Multimedia Interface, HDMI Trade dress and the HDMI Logos are trademarks or registered trademarks of HDMI Licensing Administrator, Inc

Medical all-in-ones

MEDICAL ALL-IN-ONES



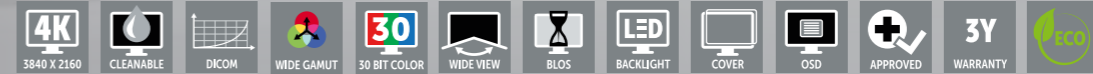
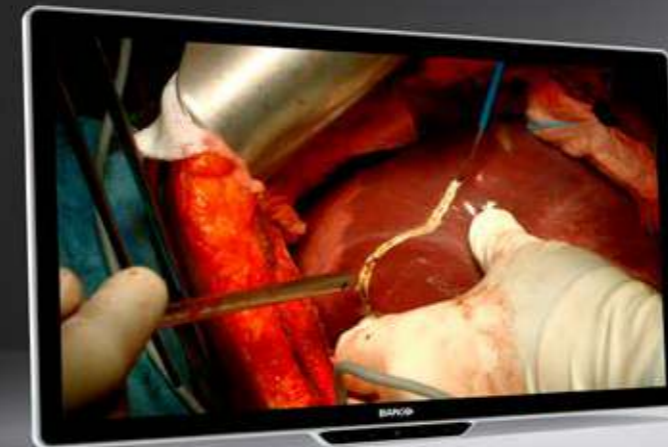
SPECIFICATIONS	JAO 18 MkII*	JAO 21*	MUIP-2213
Warranty	2 years	2 years	3 years
Screen technology	a-Si TFT LCD	a-Si TFT LCD	a-Si TFT LCD
Diagonal size	18.5"	21.5"	13.3"
Aspect ratio	16:9	16:9	16:9
Native resolution	1366x768	1920x1080	1920x1080
Luminance	300 cd/m ²	250 cd/m ²	400 cd/m ²
Touch screen	PCAP multi-touch with 10 fingers (supports gloves touch)	PCAP multi-touch with 10 fingers (supports gloves touch)	PCAP multi-touch with 10 fingers (supports gloves touch)
Screen protection	N/A	N/A	Anti-glare treatment
Cleanability	IP65	IP65	IPX3
Video input signals	N/A	N/A	N/A
Medical Device Regulations	Medical grade ITE device	Medical grade ITE device	Medical grade ITE device
Accessories	Extended Cables for ARS5 USB Cable RJ11 6P6C Cable RJ45 Cable VESA Mounting Screws Thumbscrew	Extended Cables for ARS5 USB Cable RJ11 6P6C Cable RJ45 Cable VESA Mounting Screws Thumbscrew	Desktop stand
Package includes	JAO18 MKII, PSU 90W Medical Adapter (19V @ 4.74 A Adapter) EU Power cord	JAO21, PSU 90W Medical Adapter (19V @ 4.74 A Adapter) EU Power cord, Extended power cable	MUIP-2213, Sealed connector cover, AC/DC Power adapter (100-240VAC) & EU / US Power cord (depending on the model) User guide (English)
Options	Ask about our different models and associated accessories		

*This product is subject to regional availability.

AMM & MDXC

surgery

endoscopy



Surgical and endoscopy displays

A family of surgical and endoscopy displays designed for real-time imaging in the operating room. The portfolio comprises near-patient and large-screen displays for use in any environment where surgical procedures are carried out, including the endoscopy room, interventional suite or hybrid OR. Available in high definition or 4K ultra-high definition.

Your benefits

- > Deep blacks and accurate colors from any viewing angle
- > 4:4:4 chroma subsampling for impeccable color accuracy
- > Near-zero latency provides perfect surgical hand-eye coordination
- > Improved visualization in high ambient light environments
- > Backlight output stabilization guarantees image stability and brightness over the lifetime of the display
- > Cleanable infection control design complies with strict OR hygiene standards
- > Unique cable management system makes it easy to install and disinfect
- > Automated failover feature so a backup signal is always available
- > Perfect match with our [Nexxis OR-over-IP platform](#) for full OR integration

4 ways 4K changes surgical imaging:



[Download ebook](#)

[Models and options](#)

SURGICAL DISPLAYS

ENDOSCOPY DISPLAYS

LARGE SCREEN DISPLAYS



SPECIFICATIONS	AMM215WTP	AMM240ED	MDSC-8427 12G	MDSC-8527	MDSC-8231 12G	MDSC-8232 M3D	MDSC-8232 3xB	MDSC-8532	MDSC-8255	MDAC-8355
Warranty	2 years	2 years	3 years	3 years	3 years	3 years	3 years	3 years	3 years	3 years
Active screen size (H x V)	476 x 267 mm (18.7 x 10.5")	520.4 x 326 mm (20.46" x 12.83")	597 x 336 mm (23.5" x 13.2")	596 x 335 mm (23.5" x 13.2")	698 x 368 mm (27.48" x 14.49")	698 x 368 mm (27.48" x 14.49")	698 x 368 mm (27.48" x 14.49")	708 x 399 mm (27.87" x 15.71")	1210 x 640 mm (47.64" x 25.20")	1210 x 680 mm
Screen technology	TFT AM LCD / LED Backlight	TFT AM LCD / LED Backlight	TFT AM LCD / IPS-PRO technology / LED backlight	TFT AM LCD / LED backlight	TFT AM LCD / IPS-PRO technology / LED backlight	TFT AM LCD / IPS-PRO technology / LED backlight	TFT AM LCD / IPS-PRO technology / LED backlight	TFT AM LCD / LED back-light	TFT AM LCD / IPS technology / LED backlight	a-si TFT active matrix, IPS
Active screen size (diagonal)	21.46" (545.2 mm)	24.07" (611.3 mm)	27" (685 mm)	27" (684 mm)	31" (789 mm)	31" (789 mm)	31" (789 mm)	32" (813 mm)	54.6" (1388 mm)	54.6" (1388 mm)
Aspect ratio	16:9	16:10	16:9	16:9	17:9	17:9/16:9	17:9/16:9	16:9	16:9	16:9
Resolution	Full HD 1920 x 1080	WUXGA 1920 x 1200	4K UHD 3840 x 2160	4K UHD 3840 x 2160	4K-2K 4096 x 2160	4K-2K (4096 x 2160) / UHD (3840 x 2160)	4K-2K (4096 x 2160) / UHD (3840 x 2160)	4K UHD 3840 x 2160	4K UHD 3840 x 2160	4K UHD 3840 x 2160
Luminance	250 cd/m ²	300 cd/m ²	750 cd/m ²	800 cd/m ²	550 cd/m ²	450 cd/m ²	450 cd/m ²	850 cd/m ²	500 cd/m ²	350 cd/m ²
Contrast ratio	1000:1	1000:1	1400:1	1000:1	1400:1	1300:1	1300:1	1350:1	1000:1	1100:1
Front protection screen	pCap touch (10 points)	Anti-reflective PMMA protective cover	2-side anti-reflective glass with anti-finger-print	2-side anti-reflective alkali-aluminosilicate glass cover	Scratch-resistant 2-side anti-reflective alkali-aluminosilicate glass cover	Scratch-resistant 2-side anti-reflective alkali-aluminosilicate glass cover	Scratch-resistant 2-side anti-reflective alkali-aluminosilicate glass cover	2-side anti-reflective alkali-aluminosilicate glass cover	Scratch-resistant, 2-side anti-reflective glass cover	2-side anti-reflective laminated safety glass
Cable management	n/a	Yes	Yes	Yes	Yes	Yes	Yes	Yes	Yes	N/A
Protection rating	IPx1	IP22	IP21 (IP45 front side)	IP21 (IP45 front side)	IP20 (IP45 front side only)	IP20 (IP45 front side only)	IP20 (IP45 front side only)	IP21 (IP45 front side only)	IP20 (IP45 front side)	IP20 (IP45 front side)
Failover	N/A	N/A	Yes	Yes	Yes	Yes	Yes	Yes	Yes	Yes (black version only)
Video inputs	DVI-I, VGA (D-Sub, 15pin)	1xDVI-I, 1x HD15, 1x Y/C, 1x 3G-SDI, 1x RGBS / YPbPr	4K-UHD input, either: Quad-link 3G-SDI, 12G-SDI, 1x DP 1.1 (all up to 4096 x 2160 @50Hz/60Hz) or 2x DP 1.1 (up to 2048 x 2160 @50Hz/60Hz) FHD input (upscaled to 4K): 1x DVI-SL	SSTF version 4K-UHD input: 1x DP 1.2 SST/MST 2x HDMI™ 2.0 (all up to 3840 x 2160 @ 50/60 Hz) FHD input (upscaled to UHD): 1x DVI, 1x 3G-SDI* NXF version 4K-UHD input: 1x DP 1.2 SST / MST 1x HDMI™ 2.0 (all up to 3840 x 2160 @ 50/60 Hz) FHD input (upscaled to UHD): 1x DVI, 1x 3G-SDI 2x FO SFP + 4K-UHD Nexxis link*	4K-UHD input, either: Quad-link 3G-SDI, 12G-SDI, 1x DP 1.1, 1x DP 1.2 MST, 2x HDMI™ 2.0 (all up to 4096 x 2160 @50Hz/60Hz) or 2x DP 1.1 (up to 2048 x 2160 @50Hz/60Hz) FHD input (upscaled to UHD): 1x DVI	2D mode: 4K-UHD resolution: 3x DP 1.1, 3x DP 1.1, 1x DP 1.2 MST, 2x f.o. SFP + for Nexxis link FHD resolution (upscaled to 4K): 1x DVI, 1x 3G-SDI 3D mode: 4K-UHD resolution: 3x DP 1.1, 1x DP 1.2 MST, 2x f.o. SFP + for Nexxis link FHD input: 1x DVI, 1x 3G-SDI	2D mode: 4K-UHD resolution: 3x DP 1.1, 1x DP 1.2 MST, 1x 12G-SDI, 1x HDMI™2.0 (3HB) FHD resolution (upscaled to 4K): 1x DVI 3D mode: 4K-UHD resolution: 3x DP 1.1, 1x DP 1.2 MST, 1x 12G-SDI (3SB), 1x HDMI™2.0 (3HB) FHD resolution: 2x 3G-SDI (dual stream)	SSTF version 4K-UHD input: 1x DP 1.2 SST/MST 2x HDMI™ 2.0 (all up to 3840 x 2160 @ 50/60 Hz) FHD input (upscaled to UHD): 1x DVI, 1x 3G-SDI * NXF version 4K-UHD input: 1x DP 1.2 SST / MST 1x HDMI™ 2.0 (all up to 3840 x 2160 @ 50/60 Hz) FHD input (upscaled to UHD): 1x DVI, 1x 3G-SDI 2xFO SFP + 4K-UHD Nexxis link*	2x DP 1.1, 1x DP 1.2 MST, 2x HDMI™ 2.0, 1x DVI, 1x 3G-SDI Optional: 12G version: 2Quad-link SDI, 12G-SDI, integrated Nexxis version: MNA-240 network adapter	2x DVI Dual link 4x DVI Single Link 1x DP 1.2 SST
Video outputs	SDI / S-video / Composite Video, RGBS / YPbPr	1x DVI-I, 1x 3G-SDI	2x 12G-SDI (input loop through), 1x DVI (4K display screen clone - downscaled to FHD)	DP 1.2 SST, 3G-SDI	2x 12G-SDI (input loop through), 1x DVI (4K display screen clone - downscaled to FHD)	2D mode: 1x 3G-SDI, 1x DVI 3D mode: 1x DVI	2x 3G-SDI (3G-SDI input loop through), 1x DVI	DP 1.2 SST, 3G-SDI	DVI (screen clone) 3G-SDI, 12G version: 12G-SDI	N/A
Certifications	FDA: Medical Device Class I EC: Medical Device Class I (MDR (EU) 2017/745)	FDA: Medical Device Class I EC: Medical Device Class I (MDR (EU) 2017/745)	FDA: Medical Device Class I EC: Medical Device Class I (MDR (EU) 2017/745)	FDA: Medical Device Class I EC: Medical Device Class I (MDR (EU) 2017/745)	FDA: Medical Device Class I EC: Medical Device Class I (MDR (EU) 2017/745)	FDA: Medical Device Class I EC: Medical Device Class I (MDR (EU) 2017/745)	FDA: Medical Device Class I EC: Medical Device Class I (MDR (EU) 2017/745)	FDA: Medical Device Class I EC: Medical Device Class I (MDR (EU) 2017/745)	FDA: Medical Device Class I EC: Medical Device Class I (MDR (EU) 2017/745)	Medical grade ITE device

The terms HDMI, HDMI High-Definition Multimedia Interface, HDMI Trade dress and the HDMI Logos are trademarks or registered trademarks of HDMI Licensing Administrator, Inc

* DP, HDMI and DVI all support HDCP 1.4

MDMX-MNA

surgery



In-wall displays for the OR

Barco's MDMX family is a series of in-wall consoles for the operating room. Combine and view multiple images, by relying on an intuitive control system. The consoles have built-in Nexxis functionality and a programmable Nexxis button, so they can be integrated easily within both new and existing Nexxis systems.

Nexxis is available via OR solution providers, ask your contact person about it!

Your benefits

- > Enjoy ergonomic viewing support for everyone in the OR: from doctors and nurses to trainees
- > Place multiple images or video sources next to each other
- > Don't lose space, the consoles are built into the OR wall
- > Interact with remote-PC video sources as if you're in front of them
- > 2-year warranty

IN-WALL CONSOLES FOR THE OR



SPECIFICATIONS

	MDMX-22400 GNTB	MDMX-25500 GNNB	MDMX-22449 GNTB
Warranty	2 years	2 years	2 years
Active screen size	15": 376 x 73 mm (14.8 x 2.9") 24": 527 x 296 mm (20.8 x 11.7")	1210 mm x 680 mm (47.6 x 26.8")	15": 376 x 73 mm (14.8 x 2.9") 24": 527 x 296 mm (20.8 x 11.7") 49": 1074 x 604 mm (42.3 x 23.8")
Screen technology	15": MVA/WLED 24": IPS/WLED	IPS/WLED	15": MVA/WLED 24": IPS/WLED 49": IPS/WLED
Diagonal size	15": 384 mm (15.1") 24": 605 mm (23.8")	1388 mm (54.64")	15": 384 mm (15.1") 24": 605 mm (23.8") 49": 1232 mm (48.5")
Aspect ratio	15": 160:31 24": 16:9	16:9	15": 160:31 24": 16:9 49": 16:9
Native resolution	15": 1280 x 248 24": 1920 x 1080	3840 x 2160	15": 1280 x 248 24": 1920 x 1080 49": 3840 x 2160
Luminance	15": 300 cd/m ² 24": 250 cd/m ²	500 cd/m ²	15": 300 cd/m ² 24": 250 cd/m ² 49": 500 cd/m ²
Contrast ratio	15": 2000:1 24": 1000:1	1100:1	15": 2000:1 24": 1000:1 49": 1100:1
Screen protection	Protective, anti-reflective glass front cover	Protective, non-reflective glass cover	Protective, non-reflective glass cover
Cleanability	N/A	N/A	N/A
Video input signals	1 x 10GbE Fiber Optic Interface for 24" FHD Nexxis link Optional: 2 x 10GbE Fiber Optic Interface for 1x mobile device connectivity on front	2 x 10GbE Fiber Optic Interface for 55" UHD Nexxis link Optional: 4 x 10GbE Fiber Optic Interface for 2x mobile device connectivity on front	1 x 10GbE Fiber Optic Interface for 24" FHD Nexxis link 2 x 10GbE Fiber Optic Interface for 49" UHD Nexxis link Optional: 4 x 10GbE Fiber Optic Interface for 2x mobile device connectivity on front
Medical device regulations	Medical device Class I	Medical device Class I	Medical device Class I
Options	<ul style="list-style-type: none"> • Touchscreen • Neutrik opticalCON accessories • Keyboard/trackpad module • Ask about our different model options and associated accessories • Additional service and warranty options 	<ul style="list-style-type: none"> • Neutrik opticalCON accessories • Keyboard/trackpad module • Ask about our different model options and associated accessories • Additional service and warranty options 	<ul style="list-style-type: none"> • Touchscreen • 1 or 2 keyboard/trackpad modules • Ask about our different model options and associated accessories • Additional service and warranty options

Nexxis

surgery



Platforms for the digital operating room

Nexxis™ is our video-over-IP platform for the integrated digital operating room. It makes it possible for you to share uncompressed, high-resolution video (and audio) in and between your operating rooms. This unique technology platform has been specifically designed for integration into the digital OR.

Your benefits

- > Raw, uncompressed images – eliminating artifacts
- > Near-zero latency for perfect hand-eye coordination
- > 4K end-to-end
- > Simple to set up the OR (all you need is a single optical cable)
- > Easy plug and play of devices
- > Central & remote control
- > Always up to date with the latest networking and visualization technologies
- > Easy to adopt new integration requirements in the OR
- > Easy to connect new ORs to the network architecture
- > Expansion results in lower TCO

Nexxis integrates into the majority of the world's leading OR solution providers. Ask your contact person about Nexxis, its benefits of operational efficacy and how it can future-proof your ORs.

Nexxis WorkSpot

Control room solution for interventional surgery

Offering one view of all information as well as flexible layouts, Nexxis WorkSpot has been designed to improve teamwork and reduce clutter and complexity in the interventional control room. It brings together all imaging sources on a single display, managed by a single keyboard and mouse.

NexxisLive

Healthcare collaboration & conferencing solution



Remote work is everywhere, so why not make it happen in hospitals, too? NexxisLive can be used by any healthcare professional - with any level of expertise; as well as medical device representatives or experts.

Basically, anyone in the surgical and interventional arena who needs to:

- > collaborate with remote users, to consult, to mentor or proctor sessions
- > assist a team during procedures or cases
- > teach to students who are in a university classroom or lecture hall
- > broadcast a live-procedure to a congress venue – in real time under secured bi-directional communication

With NexxisLive, you can talk, chat, share and draw as if you're all in the same room. No matter how far away you are.

Collaborate, educate and demonstrate, live from your OR



[Watch video](#)

NexxisLive during surgery at AZ Groeninge hospital, Belgium



[Watch video](#)

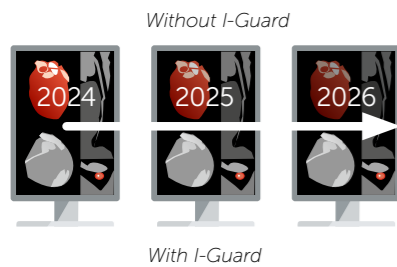
Barco technologies that make a difference

I-Guard™ front sensor

This integrated, patented front-of-screen photometer has become the industry-standard technology for monitoring image quality and DICOM consistency. The new generation of I-Guard has been improved to measure much finer gradations of colors spread over the color gamut of the display. Combined with Barco's QAWeb service, it provides an easy-to-use tool for calibration and Quality Assurance.

Benefits

- > Worry-free DICOM accuracy
- > Continuous, automated QA of the entire optical stack
- > Remote assessment of your display's image quality

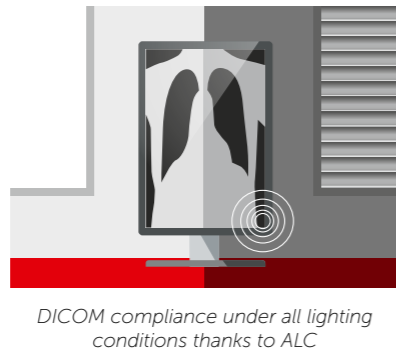


Ambient Light Compensation™ (ALC)

Ensures that your diagnostic display system remains DICOM compliant under all lighting conditions by monitoring display brightness compared to the ambient light level in the room. In combination with QAWeb, ALC warns you when the ambient light level exceeds a predefined threshold.

Benefits

- > DICOM compliance under all lighting conditions
- > Optimal image quality in every environment so no detail goes unnoticed

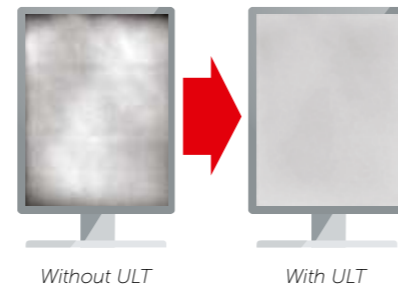


Uniform Luminance Technology™ (ULT)

LCD panels typically suffer from non-uniform behavior across more than 25% of the screen area, causing noise in the image. ULT eliminates those luminance and color non-uniformities, making sure that your display is compliant with DICOM GSDF across the entire screen area.

Benefits

- > Uniform luminance across the entire screen
- > Perfect DICOM compliance from center to corner

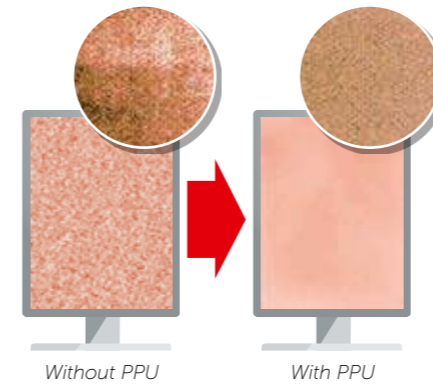


Color Per Pixel Uniformity™ (PPU)

Measures and adjusts the luminance of each pixel and makes it permanently DICOM compliant. As such, PPU eliminates screen noise, ensuring consistent colors and greyscales.

Benefits

- > Reduced screen noise
- > Improved contrast and accuracy in fine details
- > Improved image quality at a lower dose to the patient

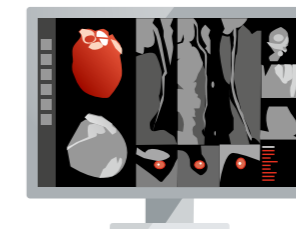


Fusion

'Fusion' design replaces a dual-head display setup by a single, large-screen monitor without a hindering central bezel. It allows you to place more images on the screen – just the way you want – which has proven to increase productivity by up to 19% and reduce eye strain.

Benefits

- > Improved reading productivity
- > Easy side-by-side comparison of studies
- > Reduced eye fatigue



Barco Optical Glass™

Reduces reflection, enhances image sharpness and viewing comfort. The multi-coated glass is highly durable, scratch-resistant, and protects the LCD panel from physical damage. A protective front cover – available on all Barco displays – further enhances the diagnostic experience.

Benefits

- > Protection of your valuable LCD panel
- > Improved image contrast & minimal reflections
- > Easy and safe cleaning



I-Guard video



Watch video

ULT technology highlight



Download

Coronis Fusion video



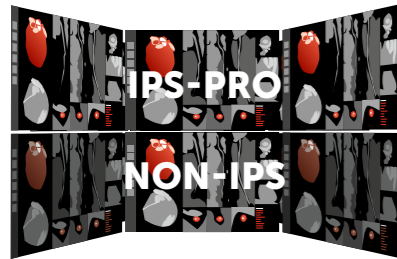
Watch video

IPS-Pro

A breakthrough LCD architecture offering a significantly wider viewing angle than competing LCD technologies. It ensures images are displayed more accurately and with a higher contrast ratio near the sides of the display. With IPS-Pro, the viewing angle is 120°, which is nearly twice the value achieved by other technologies.

Benefits

- > High-quality visualization of images
- > Wider viewing angle improves multiuser viewing

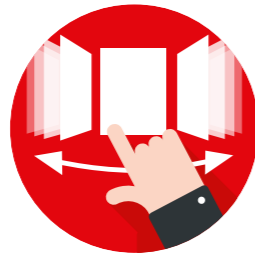


RapidFrame™

For high-speed cine imaging without blur when reviewing multi-frame image sequences – such as CT, tomosynthesis, breast ultrasound and breast MRI – or when hovering over the image with the magnifying glass. RapidFrame technology counteracts motion blur by more quickly adapting pixels to a high frame rate.

Benefits

- > High-speed cine imaging without blur for fast interpretation
- > Increased screening efficiency due to highly efficient diagnostic workflow

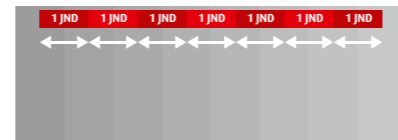


I-Luminate™

Simply push the I-Luminate™ 'hot light' button to temporarily boost your display brightness, and get a clearer view. Combined with Barco's handy film clip, I-Luminate allows you to compare studies with film-based priors on the display.

Benefits

- > Enhanced perception of small and low contrast details
- > Simplified comparison with film-based studies
- > Uninterrupted DICOM-compliance

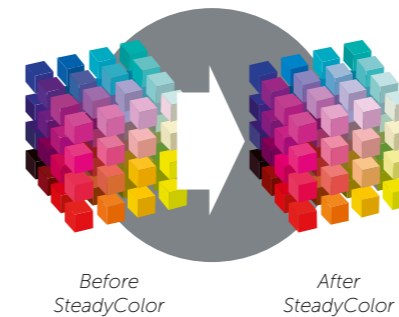


SteadyColor™ & SteadyGray™

Around 90% of images generated are now in color and color is often used for additional functionality (e.g. combining Doppler images with ultrasound). In order to guarantee consistent, perceptually linear color and still meet the DICOM standard for grayscales, SteadyColor executes advanced calibration for both grayscale and all Just Noticeable Differences (JNDs). This is achieved using multiple sensors in combination with numerous 3D Look-Up Tables (LUTs). SteadyGray uses the same color calibration technology to achieve a more constant and consistent gray appearance.

Benefits

- > Maximize the diagnostic value of color in images
- > Maintain image quality and DICOM compliance under all lighting conditions

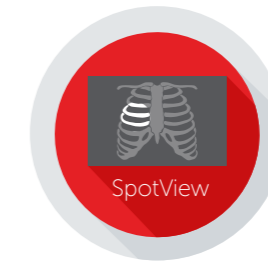


SpotView™

SpotView creates a bright focal point on the screen, enhancing brightness and contrast inside a circular region of interest while dimming the surrounding image area. This heightens visibility of subtle differences in the image. With SpotView Mag, you can even double the size of the image so no detail goes unnoticed. SpotView has been proven to decrease reading time by 15.5%, with 6% increased reading accuracy in evaluation of mammography contrast-detail phantom.

Benefits

- > Better visibility of subtle differences in the image
- > Extremely helpful when viewing pediatric extremities, breast calcifications and chest exams

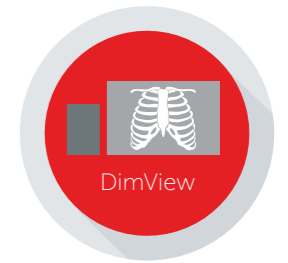


DimView™

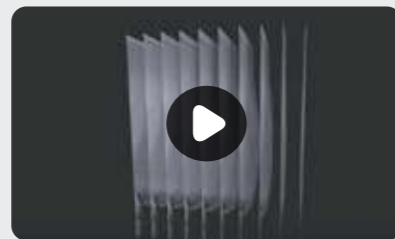
DimView automatically dims the auxiliary displays used for patient worklists or dictation, reducing peripheral ambient light during readings so the eye can better focus on details on the diagnostic display.

Benefits

- > Improved focus on the main display, no distractions
- > More ergonomic reading experience



RapidFrame video



Watch video

SteadyColor technology highlight



Download

SpotView video



Watch video

DimView video



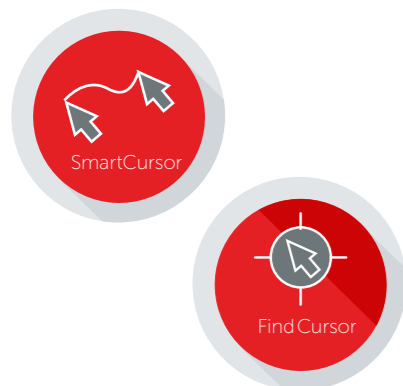
Watch video

SmartCursor™/ FindCursor™

The use of multiple resolution displays in a PACS workstation results in the cursor often getting stuck traveling from one display to another, if you can even locate the cursor in the first place. SmartCursor maps the cursor to the correct places in the adjacent display. FindCursor indicates the location of the cursor with a highlighted circle.

Benefits

- > Avoid losing time locating or moving the mouse cursor
- > Smoother and faster workflow



VirtualView™

VirtualView provides radiologists with a virtual navigational head on the main display. It appears and disappears on user command, allowing you to add or remove this screen content at your convenience.

Benefits

- > View other screen content more comfortably
- > Ideal for viewing worklists, research, dictation, or ancillary tasks
- > Reduce the number of displays needed; simplify the desktop

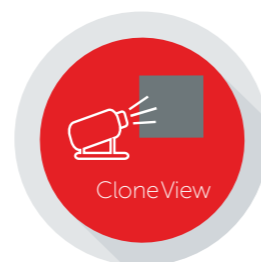


Conference CloneView™

Conference CloneView software is a high-performance, easy-to-use tool for projecting medical images from a diagnostic display onto a large screen, especially useful in classroom settings.

Benefits

- > High-quality cloned image without losing pixel precision
- > Fosters collaboration between peers
- > Ideal during multi-disciplinary team meetings



Application Appearance Manager™

Application Appearance Manager allows you to individually manage the color profile and luminance of each application window so content appears as intended.

Benefits

- > Seamlessly integrate color (e.g. color photos) into the diagnostic workflow
- > Manage the luminance of application windows depending on image content

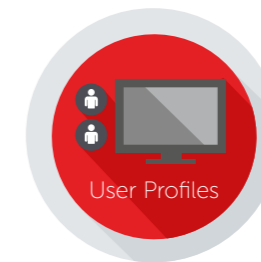


User Profiles

User Profiles creates a custom profile, set per modality and per user. It enables a quick environment switch for image type, such as a lower luminance for X-ray images and high

Benefits

- > Read images according to your own preferences
- > Automatically get the right display settings for every modality

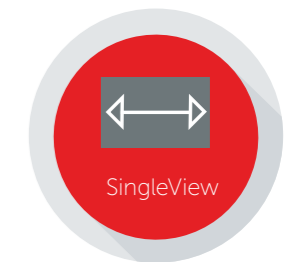


SingleView™

SingleView enables the use of the entire display as one display, and eliminates any tearing down the center of the display.

Benefits

- > More flexible desktop where images can be placed in the center of the screen
- > More ergonomic viewing experience



Screenshot

Capturing ideal images for meetings and review, this tool enables you to take a screenshot of what is currently in focus.

Benefits

- > Easy to communicate and share images and data
- > Fosters easy collaboration between peers



SmartCursor / FindCursor video



Watch video



Watch video

VirtualView video



Watch video

Appearance Manager video



Watch video

User Profiles video



Watch video

Wide gamut & color calibration

Wide gamut and color calibration ensure true-to-life color reproduction essential for accurate medical imaging. Barco's surgical displays provide consistent color accuracy, enhancing visual clarity and detail recognition, which is critical for surgical precision.

Benefits

- > True-to-life color reproduction
- > Consistent color accuracy
- > Enhanced visual clarity and detail recognition



Composition, PiP & PaP

Composition, PiP (Picture-in-Picture) & PaP (Picture-and-Picture) features in Barco's surgical displays allow multiple image sources to be displayed simultaneously, enhancing workflow efficiency and providing comprehensive visual information during surgical procedures.

Benefits

- > Simultaneous display of multiple image sources
- > Enhanced workflow efficiency
- > Comprehensive visual information

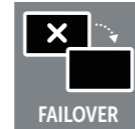


Failover

Failover capabilities in Barco's surgical displays ensure uninterrupted performance by automatically switching to a backup signal source in the event of a signal loss, maintaining continuous operation.

Benefits

- > Uninterrupted performance
- > Enhanced patient safety
- > Continuous availability of critical visual information



BLOS (Backlight Output Stabilization)

Backlight Output Stabilization (BLOS) technology maintains optimal brightness and contrast in surgical displays, ensuring consistent image quality and enhancing the visibility of fine details.

Benefits

- > Consistent image quality
- > Enhanced detail visibility
- > Reduced eye strain



Nexxis Integration

Nexxis Integration allows Barco's surgical displays to seamlessly connect with the Nexxis digital operating room platform, providing uncompressed video, audio, and data transmission with near-zero latency.

Benefits

- > Seamless connectivity
- > Real-time collaboration
- > High-quality, synchronized visual information



Icon overview

 5Y WARRANTY	Standard 5-year warranty	 FRONT SENSOR	Front-of-screen sensor	 STEADYCOLOR	DICOM grayscale and color
 10 BIT	10 bit Look Up Table	 APPROVED	Approved for medical use	 COLOR PPU	Color Per Pixel Uniformity Correction
 12 BIT	12 bit Look Up Table	 OSD	On Screen Display	 SCREENSHOT	Screenshot of image details
 30 BIT	30 bit Look Up Table	 PPU	Per Pixel Uniformity correction	 AAM	Application Appearance Manager
 LED BACKLIGHT	LED backlight	 QA WEB	QA software included	 VIRTUALVIEW	A virtual display
 ALC	Integrated Ambient Light Compensation	 PIVOT	Usable in portrait and landscape mode	 SPOTVIEW	Highlights region of interest
 BLOS	Backlight Output Stabilization	 TOUCH	Touch screen interface	 DIMVIEW	Dims auxiliary displays
 COLOR	Color display	 ULT	Uniform Luminance technology	 FIND CURSOR	Locates the mouse cursor
 GRAYSCALE	Grayscale display	 WIDE VIEW	Exceptionally wide viewing angle	 SMARTCURSOR	Avoids the cursor getting stuck
 COVER	Anti-reflective protective front cover	 SMOOTHGRAY	Ultra-smooth grayscale precision	 CLONEVIEW	For large-screen projection
 GLASS COVER	Anti-reflective protective front glass	 WIDE SCREEN	Widescreen aspect ratio	 4K 4096 X 2160	4K native display resolution of 4096 by 2160 pixels
 DL	Diagnostic Luminance (Ultra bright display)	 DISPLAYPORT	DisplayPort interface	 DAISYCHAINING	Allows daisy chaining of displays
 DICOM	Compliant with DICOM specifications	 MULTI-SENSOR	Multiple built-in sensors	 WIDE GAMUT	Displays a wide range of colors
 DURALIGHT	Long-lifetime backlights	 TOMO	Cleared for breast tomosynthesis	 3D GLASSES-BASED	Glasses-based 3D technology
 GREEN	Environmental-friendly product	 I-LUMINATE	'Hot light' button	 KVM	Easily switch between 2 workstations attached to the display
 FUSION	Seamless wide-screen desktop	 RAPIDFRAME	High-speed cine imaging without blur	 FOCALPATH	Dim and mask non-critical areas for improved optical accuracy
 I-GUARD	Integrated front-of-screen sensor	 CONSISTENCY	Front consistency sensor	 Ecolabel	Product has the Barco ecolabel

About Barco Healthcare

Improving the quality and value of care are the leading priorities for healthcare professionals today. . At a time when the amount of data and demand for mobility are growing rapidly and quality and compliance regulations are becoming stricter, healthcare systems struggle to work more efficiently, and to provide personalized care to a growing number of patients in an affordable way.

Focused on transforming the delivery of care, Barco connects healthcare professionals at every patient touch point, from the imaging room, to radiology, through specialist consultations and into the surgical suite. We offer a network of medical imaging solutions that deliver the complete picture to support more informed decisions, when and where it matters most.

It's why we are considered the gold standard for medical visualization and how we are there at every stage of the patient's journey. So healthcare professionals can focus on patients' needs and, in the end, achieve the best clinical outcome.

Visioneering a bright tomorrow

¹ Marchessoux, C., et al. (2011). Validation of a new digital breast tomosynthesis medical display. Proceedings of SPIE, 7966, 79660R

² Kimpe, T. R. & Xthona, A. (2012). Quantification of detection probability of microcalcifications at increased display luminance levels. , Breast Imaging, Springer 7361, 490-497.

³ Mony Weschler, Montefiore Medical Center, 2012

M00193-R32-0724-PC July 2024

© 2023 Barco NV. All rights reserved. Reproduction in whole or in part without written permission is prohibited. All brand names and product names are trademarks, registered trademarks or tradenames of their respective holders. Due to continued innovation, information and technical specifications are subject to change without prior notice. Please check www.barco.com for the latest specifications.

www.barco.com/healthcare

