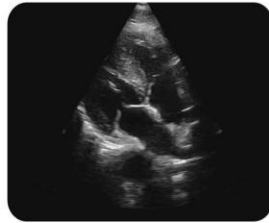
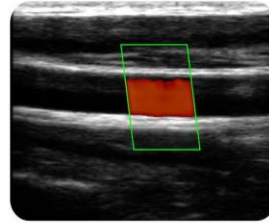


Wireless Probe Type Ultrasound Scanner

3 in 1 (Convex+Linear+Phased array all in one)



Scan to get detail introduction



Features:

- Advanced digital imaging technology, clear image
- High cost-effective
- Small and small size, easy to carry.
- Wireless type without probe cable, working freely.
- Waterproof design, convenient for sterilization.
- Remote diagnostic convenience, capability and easy image transfer

Standard Configuration:

- Wireless probe device 1 Unit
- Built-in Battery and charge cable 1 Set
- User Manual copy

Specifications:

- Frequency: Convex/Phasedarray probe 3.2MHz/5MHz, Linear probe 7.5MHz/10.0MHz
- Display Depth: Convex 90/160/220/305mm, Linear 20/40/60/80mm
- Scan angle and width: convex 45°, Phasedarray 80°, linear 40mm
- Image Adjust: Gain, DYN, Focus, Depth, Harmonic, Denoise
- Puncture assist function: the function of in-plane puncture guide line, out-of-plane puncture guide line, automatic blood vessel measurement, and the enhancement function of needle point development.
- Noise reduction: 0-1-2-3-4
- Gain: 30db-105db
- Dynamic Range: 40/50/60/70/80/90/100/110
- Cineplay: auto and manual, frames can set as 100/200/500/1000
- Measure: Length, Area, Angle, Obstetrics
- Battery working time: 3 hours
- Charge: by wireless charger, 2 hours
- Dimension: 156×60×20mm
- Weight: 250g
- Wifi type: 802.11g/20MHz/5G/450Mbps
- Working system: Apple iOS and Android, Windows



Sonostar Technologies Co., Limited

Address: C Building, #27 Yayingshi Road, Science Town, Guangzhou, China
Tel: +86-20-32382095 Fax: +86-20-62614030 Skype: sonostar-ut



www.sonostarmed.com
Mail: sales@sonostar.net